

# COMPANY PROFILE

---



Magenta Engineering Sdn. Bhd.





## COMPANY INFORMATION

### MAGENTA ENGINEERING SDN BHD

Registration No	: 535780-A
GST Register No	: 000235470848
Industry	: Manufacturing / Production
Business Address	: Plot 62, Lorong Perusahaan Maju 3, Phase 4, Prai Industrial Estate, 13600 Prai, Pulau Pinang.
Telephone No	: 04-507 7613 / 04-507 6614
Fax No	: 04-507 7167
Email Address	: <a href="mailto:info@magentaesb.com">info@magentaesb.com</a>
Principal Banker	: RHB Bank Berhad
Auditor	: Wong Liu & Partners 184A, Jalan Raja Uda, Pusat Perniagaan Raja Uda, 12300 Butterworth, Pulau Pinang.



# COMPANY OVERVIEW

Magenta Engineering was established since 2001, specialized in the Design, Sheet Metal fabrication and Machining for the domestic markets.

Magenta Engineering fabricates a vast range of quality products for all industrial sectors, general engineering works, sheet metal , automation, machine structure, steel platform, conveyor system. Apart from that, we provide our customers with the facility of customization on our metallic product. We work closely with our customers and provide support in their designing. Our customization services help us in gaining high level of customer satisfaction.

As technology evolve, expectations and requirements grown. More than 10 years in precision metal engineering industry, Magenta Engineering is well prepared to meet with the changing needs of modern world and our customer.

In Magenta Engineering, our teams of work force are well equipped with the latest technology equipment and tools. Our engineering expertise will help you find the perfect engineering solution.

We seek to be more than a partner in your business. Our dedicated engineering team is always ready to provide you with total solution range of creative precision engineered products as well as swift quality services.

Magenta Engineering is in the continuous quest for excellence in products and service. We strive to be the best by providing the ultimate engineering solution that best meets with the changing needs.





# OUR MISSION

To be reputable Engineered Metal Product Manufacturer within the region, earning respects for being professionally-managed, transparent and totally responsible.

Achieving high quality, reliable and zero defect products.

To maximize customer satisfactions with competitive price, excellent services and prompt delivery.

To continuously improve our procedures and policy, thus ensuring continuous improvements and break-through in order to provide the best in quality, technology and cost for our customers.







## SERVICES

### **Magenta Engineering**

is more than 10 years of experience in metal fabrication, we offering a full range of high quality services. Our comprehensive range of services included:

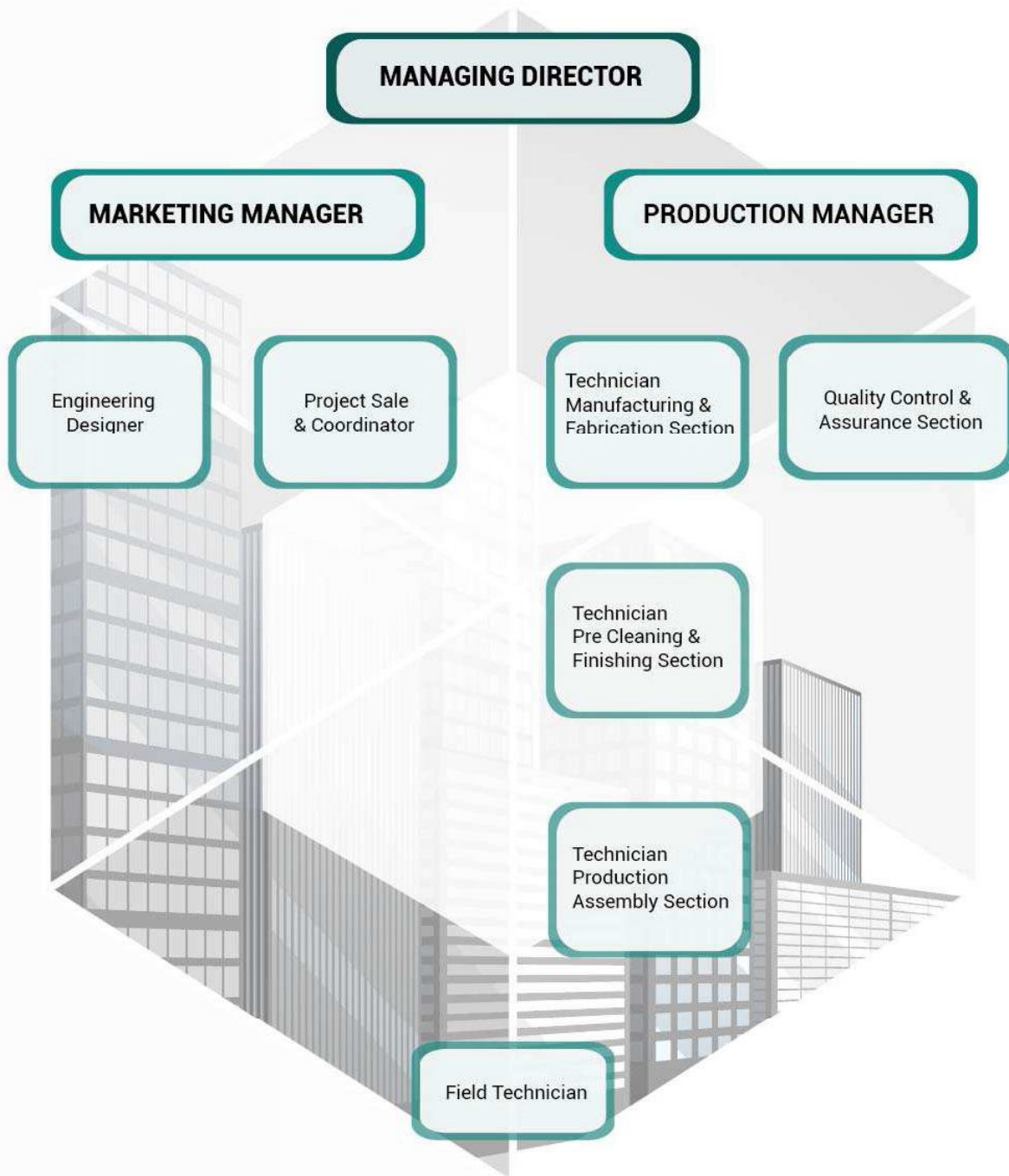
- . Drawing Design
- . Sheet Metal Fabrication
- . Steel Platform
- . Machine Structure
- . Machining
- . Automation
- . Server Equipment Rack
- . Custom Workstation
- . Electrical Switch Board
- . Conveyor System
- . Air Shower
- . Jig & Fixture

FINE



# COMPANY ORGANISATION

Magenta Engineering Sdn Bhd





## FACILITIES

In order to manufacture high quality metal products, Magenta Engineering Sdn Bhd Facilities have machine and equipment as listed:

3 units precision press brake with Auto Back-Gauge machine:



**AMADA RG35S 4FT NC BENDING MACHINE**



**MURATEC TOYO  
HPBB525AT 8FT NC  
BENDING MACHINE**



**Yawei PBB-110/3100 10FT  
CNC BENDING MACHINE**



# FACILITIES

1 unit Fiber Laser Cutting Machine and 2 units Muratec Precision CNC Punching Machine:



**G-WEIKE LF3015LN 3000W  
FIBER LASER CUTTING MACHINE**



**MURATEC CENTRUM 2000 CNC  
PUNCHING MACHINE**



**MURATEC CENTRUM 2000/Q CNC  
PUNCHING MACHINE**

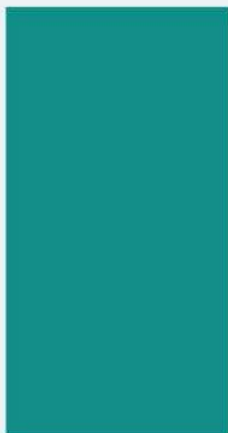
# FACILITIES



**HACO 10FT NC SHEAR  
MACHINE TS3006**



**VERTICAL MILLING  
MACHINES**



**CLEANING  
EQUIPMENT SAND  
BLASTING  
MACHINE**

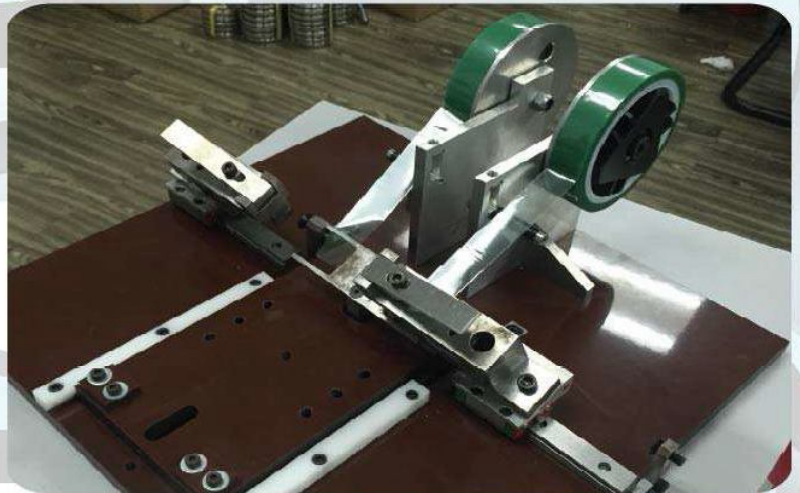




## FACILITIES

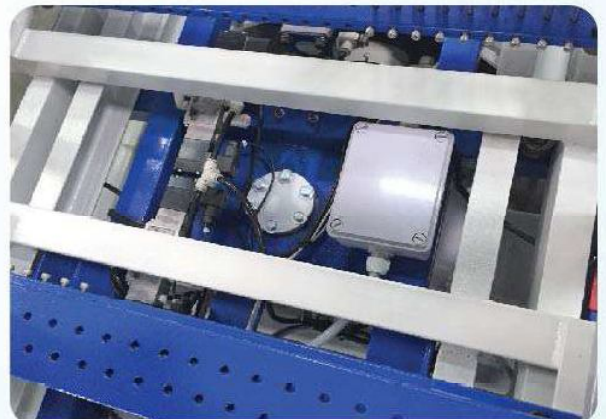
- 1 Unit Seng Heng 10ft NC shear machine
- 1 Unit universal copper bar bending & cutting machine
- 1 Unit compress air distribution system
- Inclinable press machine
- 1 Built Epoxy powder coating booth & oven curing plant (Wagner EPG Sprint)
- Brand of powder coat
  - Jotun
  - Oxyplus
- Migweld,welding sets,spot welder and other associated equipment for production use.
- Our welding materials included
  - Titanium
  - Aluminium
  - Stainless Steel
  - Mild Steel

# PRODUCT GALLERY



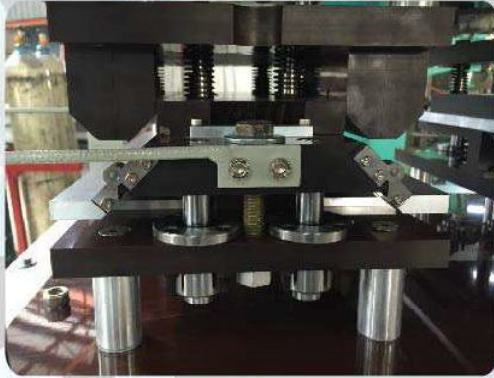


# PRODUCT GALLERY





# PRODUCT GALLERY





# PRODUCT GALLERY





# PRODUCT GALLERY





# PRODUCT GALLERY





# PRODUCT GALLERY





# PRODUCT GALLERY





# PRODUCT GALLERY





# PRODUCT GALLERY



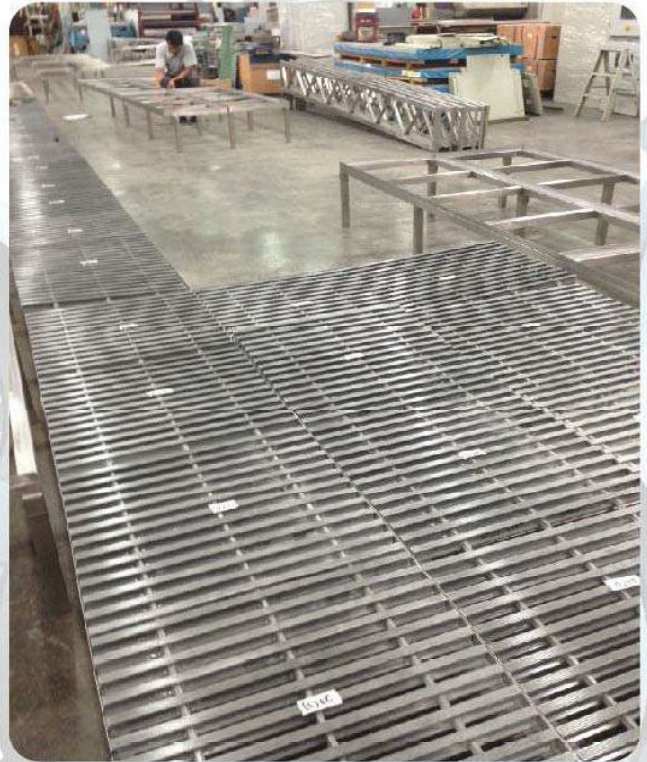


# PRODUCT GALLERY



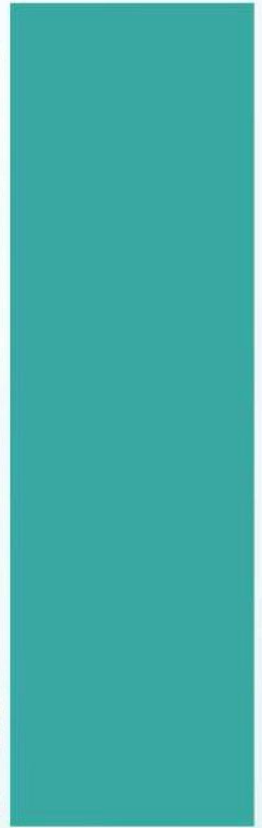


# PRODUCT GALLERY



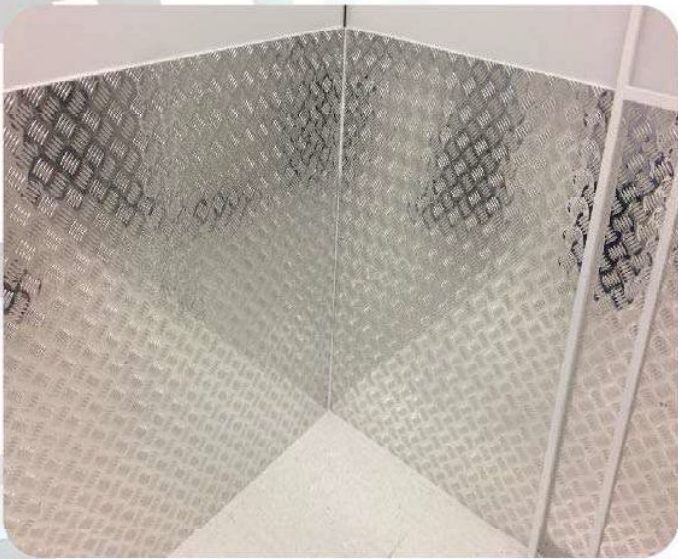


# PRODUCT GALLERY



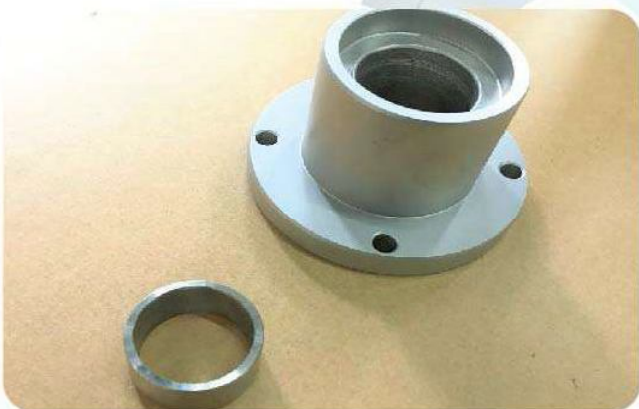
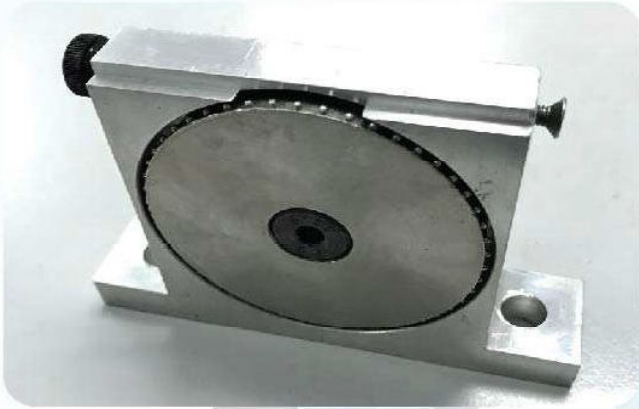


# PRODUCT GALLERY





# PRODUCT GALLERY



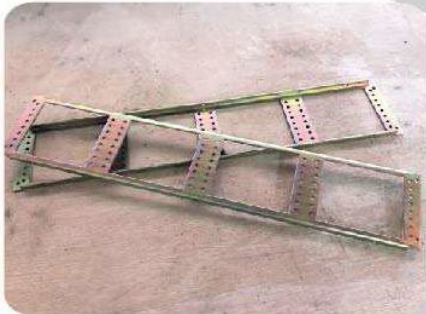
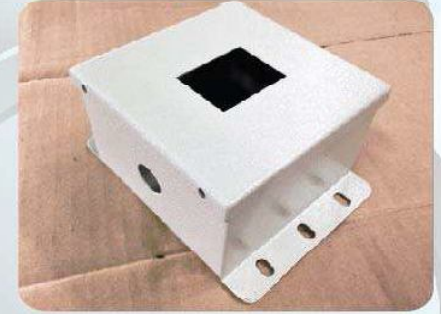
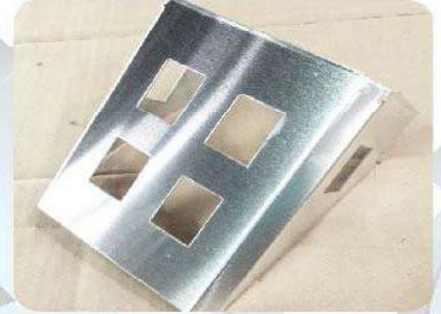


# PRODUCT GALLERY





# PRODUCT GALLERY







Magenta Engineering Sdn. Bhd.

**Business Address**

Plot 62, Lorong Perusahaan Maju, 3,  
Phase, 4, Prai Industrial Estate,  
13600 Prai, Pulau Pinang.

**Telephone No**

**04-507 7613 / 04-507 6614**